



# **BRIDGING THE WORLD: A JOURNEY THROUGH THE TOP 10 MOST FAMOUS BRIDGES**



# INTRODUCTION TO FAMOUS BRIDGES

Bridges are not just **structures**; they are symbols of **connection** and **innovation**. In this presentation, we will explore the **top 10 most famous bridges** around the world, highlighting their unique features and historical significance.





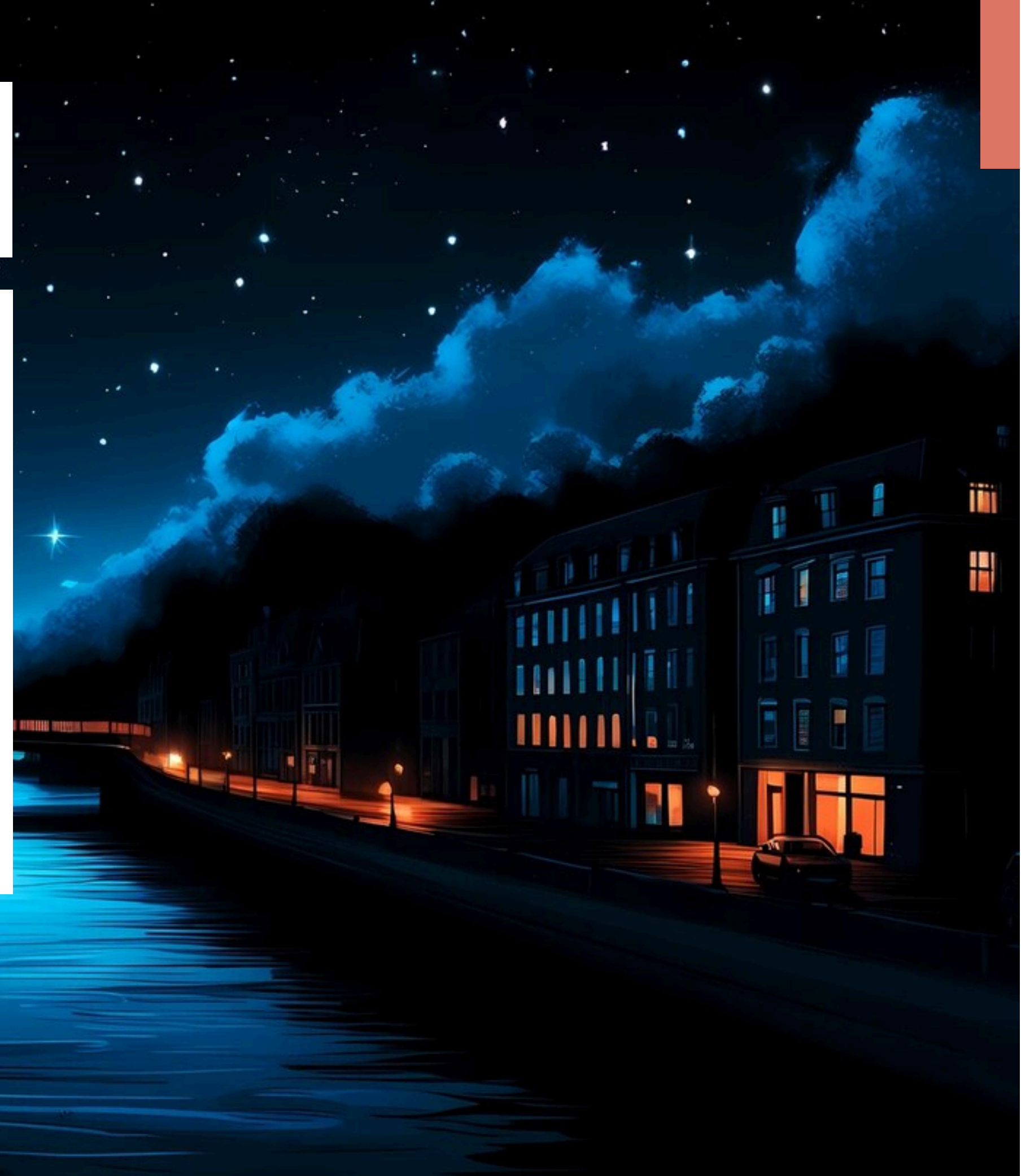


# GOLDEN GATE BRIDGE

The **Golden Gate Bridge**, located in San Francisco, California, is an iconic symbol of the city. Spanning **1.7 miles**, it was completed in 1937 and features an Art Deco design that captivates millions of visitors each year.

# TOWER BRIDGE

Tower Bridge in London is a **combined bascule and suspension bridge** completed in 1894. It spans the River Thames and is known for its **distinctive Victorian Gothic** architecture, making it one of London's most famous landmarks.







# BROOKLYN BRIDGE

The **Brooklyn Bridge** connects Manhattan and Brooklyn in New York City. Completed in 1883, it was the **first steel-wire suspension bridge** and remains a vital transportation link, as well as a popular pedestrian walkway.





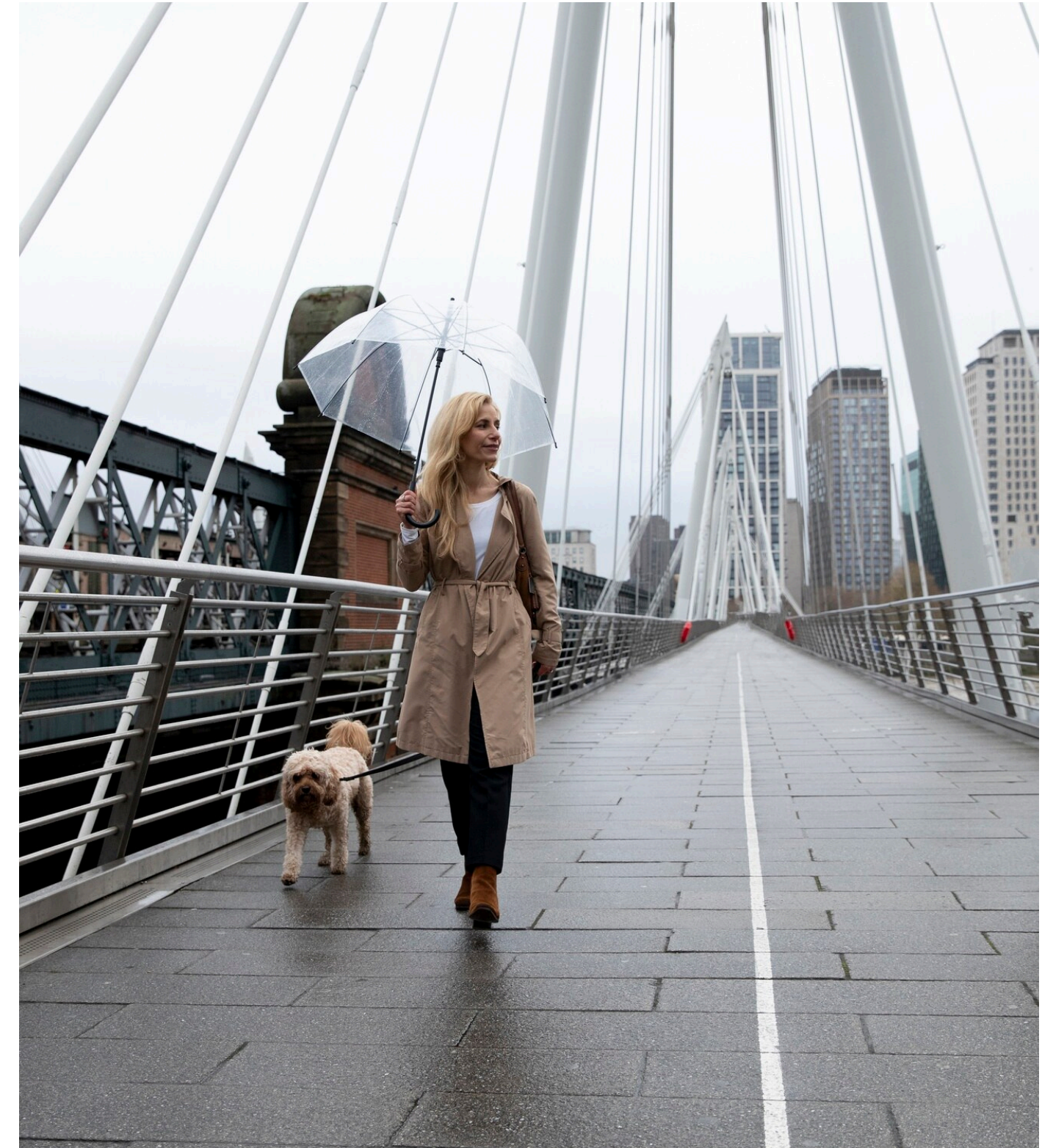
# SYDNEY HARBOUR BRIDGE

Known as the '**Coathanger**', the Sydney Harbour Bridge is an iconic Australian landmark. Opened in 1932, it spans **1,650 meters** and offers stunning views of the Sydney Opera House and the harbor.



# MILLENNIUM BRIDGE

The **Millennium Bridge** in London is a pedestrian suspension bridge that connects St. Paul's Cathedral with the Tate Modern. Opened in 2000, it is known for its **unique swaying movement**, which initially caused concern.





# CHARLES BRIDGE

The **Charles Bridge** in Prague is a historic stone bridge completed in the 15th century. It is adorned with **30 statues** and connects the Old Town with Prague Castle, making it a favorite for tourists and locals alike.





# AKASHI KAIKYŌ BRIDGE

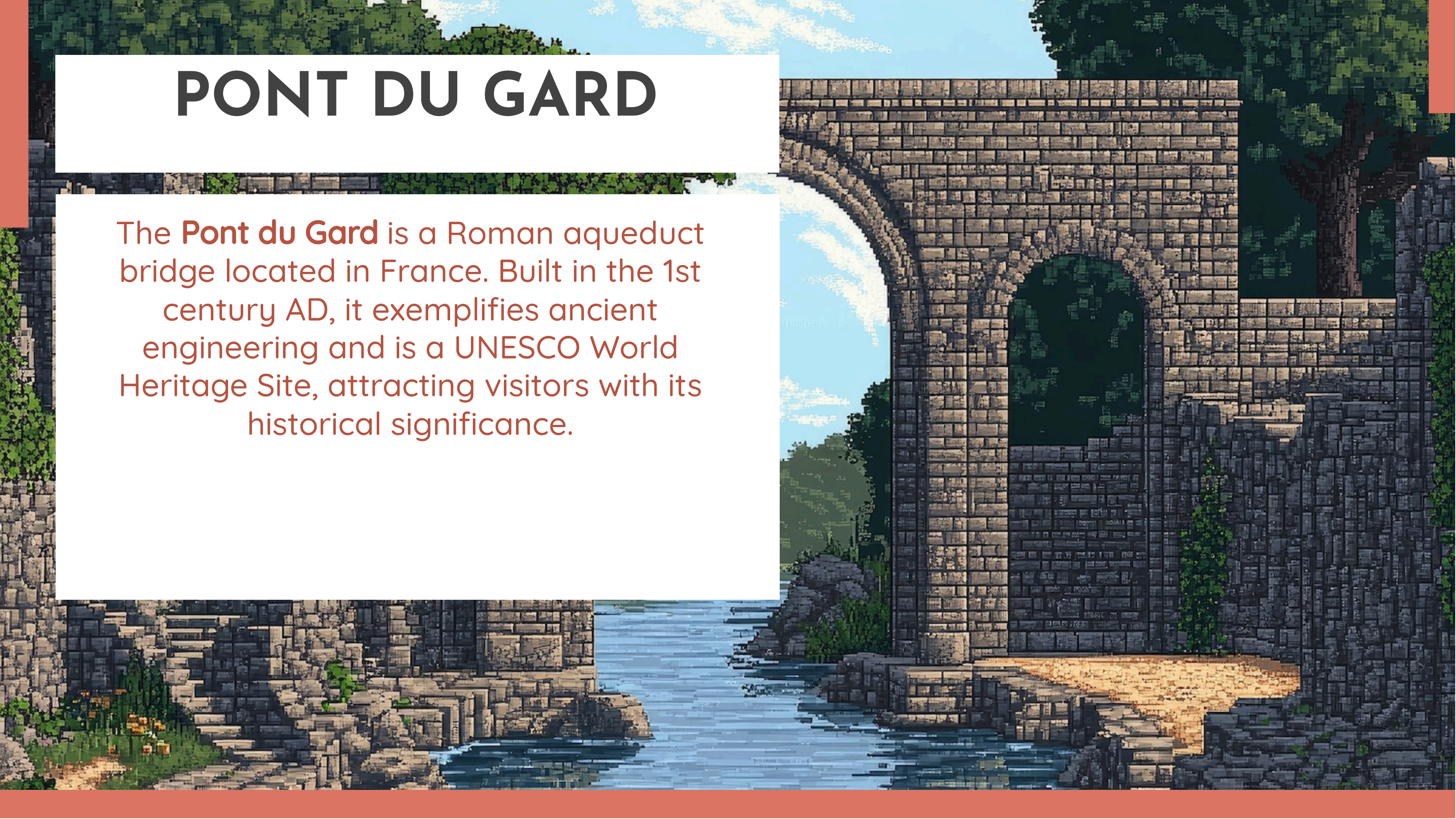


The **Akashi Kaikyō Bridge** in Japan is the longest suspension bridge in the world, measuring **1,991 meters**. Completed in 1995, it connects the city of Kobe to Awaji Island and showcases advanced engineering.



# PONT DU GARD

The **Pont du Gard** is a Roman aqueduct bridge located in France. Built in the 1st century AD, it exemplifies ancient engineering and is a UNESCO World Heritage Site, attracting visitors with its historical significance.







# CHESAPEAKE BAY BRIDGE

The **Chesapeake Bay Bridge** in Maryland spans **4.3 miles** and connects the eastern and western shores of the Chesapeake Bay. Opened in 1952, it is known for its scenic views and engineering marvel.



## CONCLUSION: THE LEGACY OF BRIDGES

Bridges are more than just physical structures; they represent **human ingenuity** and the desire to connect. From ancient times to modern engineering, these **top 10 famous bridges** continue to inspire awe and admiration worldwide.